

CERTIFICATE OF LOCATION OF GOVERNMENT CORNER

EAST 1/4 Corner of Section 5, Township 105, Range 42, 5TH P.M.

STATE OF MINNESOTA, County of MURRAY

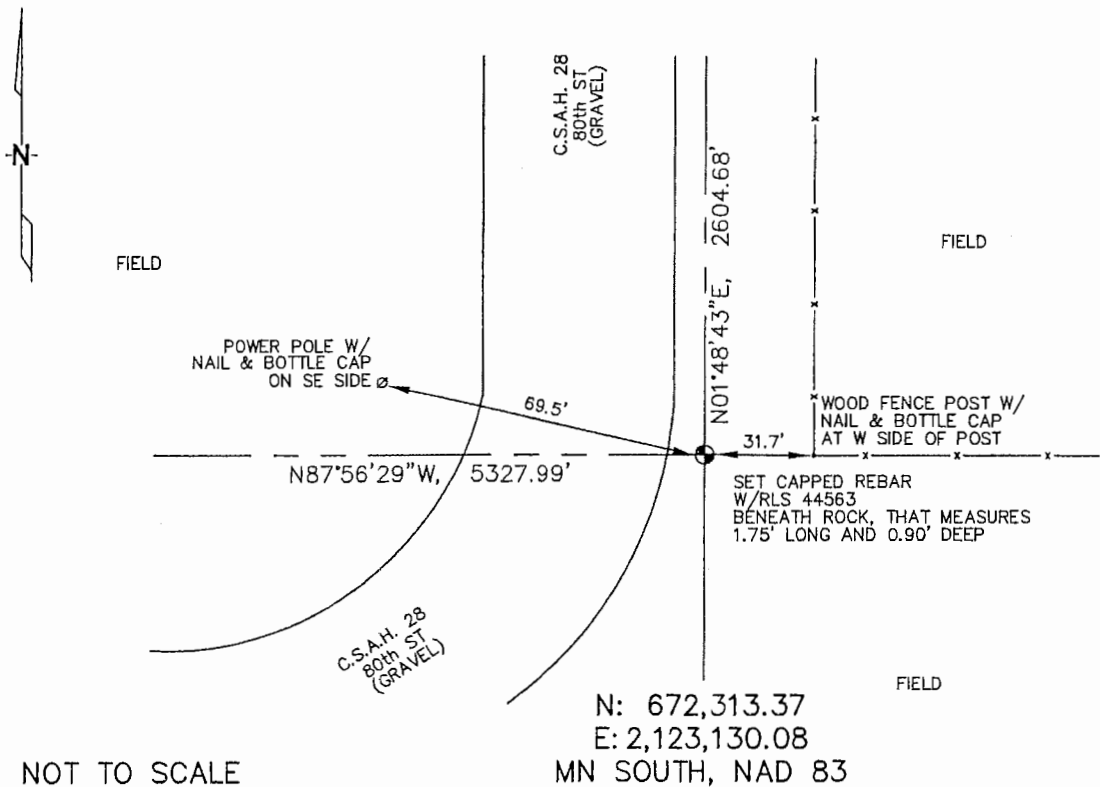
At the corner location shown on the sketch :

On 3/16/2006 found STONE, 1.75' LONG x 0.90' THICK.

left monument as found, lowered monument, removed monument (explain)

On 3/16/2006 set 5/8" REBAR WITH CAP: RLS 44563, BENEATH STONE IN SLOPE OF GROUND.

Sketch of reference ties



NOT TO SCALE

N: 672,313.37
E: 2,123,130.08
MN SOUTH, NAD 83

Statement of evidence relative to this corner location is on back page

I hereby certify that this document and the data contained herein was prepared by me or under my direct supervision.

Thomas V. Jeff 6/29/06
Thomas V. Jeff Date

Registration No. 44563

- Land Surveyor, Professional Engineer
- County Surveyor, County Engineer

OFFICE OF THE COUNTY RECORDER

County of _____

SEP 28 2006

I hereby certify that this document was filed in the Co. Recorders office at _____ .M. on the day of _____ A.D. , 20

County Recorder James V. Johnson
By _____, Deputy

DOCUMENT NO. _____

STATEMENT OF EVIDENCE:

EAST 1/4 CORNER, SECTION 5, T. 105 N., R. 42 W.,
MURRAY COUNTY, MINNESOTA

- 1861 D.W. Wellman & S.S. Smoot, US. Deputy Surveyors, monumented corner.
- ? DATE Murray Co., found stone.
Ties: 53.8' to tck in blazed willow stump;
52.2' to tack in blazed willow stump, 4' south.
- ? Date Murray Co., found stone.
Ties: E-32.0' to tack in corner of fence posts;
30.4' to tack in mail box post;
NE-38.1' to edge of steel post.
- 09/1974 Murray Co., found concrete monument, 3" below sod, in slope of ground.
Ties: E-31.65' to nail & cap in corner of fence posts;
NW-69.53' to nail & cap in power pole.
- 3/16/2006 Ulteig Engineers, Inc., Survey Crew, Brian Payne Party Chief found a 1.75' long X 0.9' thick stone in the slope of the ground. Set 5/8" rebar with cap: RLS 44563, beneath stone & set stone on top of rebar.
Ties: NW-69.5' to nail & cap on SE face of power pole;
E-31.7' to nail & bottle cap at base of fence post, on the west face of said post.
N-2604.68' to NE corner, Section 5;
W-5327.99' to West 1/4 corner, Section 5.